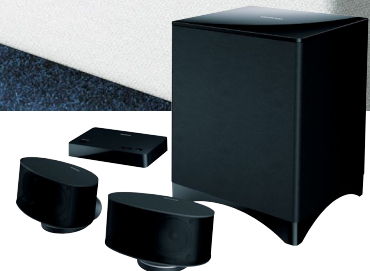


LS3100 2.1-Channel Living Speaker System

BLACK | WHITE



SRS WOW HD SRS TruVolume DOLBY DIGITAL Bluetooth



Convenience and Style in a Great-Sounding Package

If space and budget considerations run a close second to sound quality when choosing a home cinema, then this neat 2.1-channel package from Onkyo is worth a closer look. Your days of thin sound will be over, with SRS processing technology creating an immersive 3D soundfield using just two speakers—perfect for movies, music, and games. But the real beauty of the system lies in its convenience. For example, the control center is preprogrammed for use with most TV remote controllers. It turns on automatically with your television and responds to volume commands from your TV remote. Two sculpted speakers—featuring a pair of 6.5 cm drivers each—can be mounted in a variety of ways on the wall or entertainment unit. The system is also great for music, with Bluetooth 2.1 allowing you to stream from your smart phone, tablet, and laptop. Analog and digital connections are included to connect a PC or CD player. Wireless implementation extends to the powered subwoofer, which can be placed anywhere in the room you like—another handy feature in what is an exceptionally useful home cinema system.

LAP-301 2.1-Channel Control Center

- 20 W/Ch (4 Ω, 1 kHz, 0.8%, 2 Channels Driven, IEC)
- Digital Amplifier Circuitry to Maintain Clean Audio Signals
- Preset Remote Control Code for Most TV Brands and Learning Capability
- Auto Power On/Standby with TV
- Clear, Room-Filling Sound Reproduction with SRS Technology
- Vocal Mode for Clearer Voice Reproduction

- Bluetooth Version 2.1 +EDR for Wireless Audio Streaming from Compatible Smart Phones, Tablets, and Personal Computers
- Analog Audio Input (3.5 mm)
- 2 Digital Audio Inputs (Optical and Coaxial)
- Wall Mountable
- Full-Function Remote Control

SLM-301 Full-Range Acoustic-Suspension Speakers

- 2 x Full-Range 6.5 cm Cones in Each Cabinet
- Attractive Curved Design

- 2 x Detachable Speaker Stands for Greater Mounting Flexibility
- Wall Mountable

SLW-301 Wireless Subwoofer

- Wireless Design for Free Setting and Powerful Sound
- Powered Bass Reflex Design
- 16 cm Cone
- Power Output: 50 W (4 Ω, 100 Hz, 1%, IEC)
- Down-Firing
- Sculpted Feet

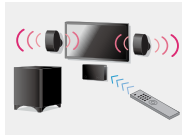


LS3100 2.1-Channel Living Speaker System

Home Cinema System Learns Your TV Remote Controller Commands

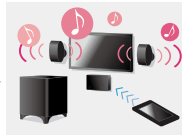
The LS3100 is programmed to accept commands from the remote controllers of most major TV brands.* The system powers up automatically when you turn on your TV, and you can adjust the volume using your usual television remote. After 5 minutes with no signal from the TV, the home cinema will switch itself off, so you don't waste power.

*Please refer to our website for more information.



Stream Music from iPhone, Tablet, and Personal Computer via Wireless Bluetooth Technology

Whether you're an iPhone or iPad user, an Android fan, or an owner of a personal computer with Bluetooth capability, streaming music to your new home cinema system couldn't be easier. Simply pair the devices, select the track or album of your choice, and hit play. The improved data transfer capabilities of Bluetooth 2.1 +EDR ensure clear and reliable sound reproduction for all kinds of music.



Experience the Sensation of 3D Surround Sound

The LS3100 comes equipped with SRS (Sound Retrieval System) Mode, which allows you to enjoy a more natural sound from stereo sources. The technology exploits the science of psychoacoustics—or how the ear pinpoints the locations of sounds in space—allowing the listener to perceive stereo sound as surround sound. Which makes for a more realistic and exciting entertainment experience.

Sound Mode for Vocal Optimization

Vocal Mode enhances dialog in movies and television so you don't have to strain to follow the action. It also optimizes vocals in music for a smoother, more natural sound. With speech and vocals rendered clearly and distinctly, you can sit back, relax, and enjoy your entertainment.

Compact Digital Amplifier for Clear, Room-Filling Audio Reproduction

The ultra-slim control unit employs digital amplification circuitry to convert power with very high levels of efficiency. This means less energy is wasted as heat. With no need for a bulky heat sink, the amplifier can be smaller and lighter, providing room-filling sound that belies its compact size.

Active Wireless Subwoofer Can Be Placed Anywhere You Like

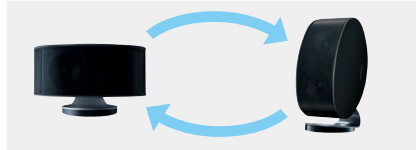
To take advantage of the low-frequency sounds in your games, movies, and music, the LS3100 employs a powered subwoofer. This type of subwoofer draws an independent energy supply, leaving the accompanying control center free to focus its power through the stereo speakers. Thanks to its wireless design, there's no need to run a cable back to the control center, meaning you can place it pretty much anywhere it looks and sounds the best.

Curved Speakers with Twin Full-Range Drivers

The LS3100 includes a pair of acoustic suspension speakers incorporating twin 6.5 cm cones in place of the usual single driver. Don't let their compact size fool you—these robust little speakers really pack a punch. Whether you choose to hang them on a wall or set them beside your TV, be prepared for deep and detailed performance in small to medium-sized rooms.

More Speaker Mounting Positions to Suit Your Entertainment Space

Our unique detachable stands allow you to position your speakers how you like them—upright, laid flat, on the wall, or on either side of your TV. If space under or around your TV is an issue, you can remove the stand and sit the speaker flush on the entertainment unit, or use them to display the speakers vertically or horizontally. Two mounting slots, meanwhile, allow you to adjust the speaker angle on the stand in either position, providing the best sound coverage for your listening space.



SPECIFICATIONS

CONTROL CENTER (LAP-301)

Amplifier Section

Power Output	200 W/Ch (4 Ω, 1 kHz, 0.8%, 2 Channels Driven, IEC)
THD+N (Total Harmonic Distortion + Noise)	0.8% (Rated Power) 0.2% (1 kHz, 1 W)
Damping Factor	20 (Front, 1 kHz, 8 Ω)
Input Sensitivity and Impedance	200 mV/47 kΩ (Line)
Frequency Response	50 Hz–20 kHz/+3 dB, -3 dB (Digital)
Signal-to-Noise Ratio	93 dB (Digital, IHF-A)
Speaker Impedance	4 Ω–8 Ω

General

Power Supply	AC 230V~, 50 Hz
Power Consumption	17.0 W
Standby Power Consumption	0.46 W (Asian Model: 0.47 W)
Dimensions (W x H x D)	187 x 32 x 120 mm
Weight	0.3 kg

SPEAKER SYSTEM

Front (SLM-301)

Speaker Type	Full-Range, Acoustic Suspension
Driver	6.5 cm Cone x 2
Frequency Response	200 Hz–20 kHz
Output Sound Pressure Level	86 dB/W/m
Max. Input Power	20 W
Nominal Impedance	4 Ω

General

Dimensions (W x H x D)	Horizontal: 169 x 78 x 108 mm Horizontal with Stand: 169 x 111 x 133 mm
Weight	0.7 kg (without Stand) 84 g (Speaker Stand)

Subwoofer (SLW-301)

Speaker Type	Bass Reflex, Powered
Driver	16 cm Cone
Frequency Response	40 Hz–200 kHz (Direct)
Power Output	50 W (4 Ω, 100 Hz, 1% IEC)
Signal-to-Noise Ratio	88 dB (Stereo, IHF-A)
Power Consumption	14.8 W
Standby Power Consumption	0.32 W

General

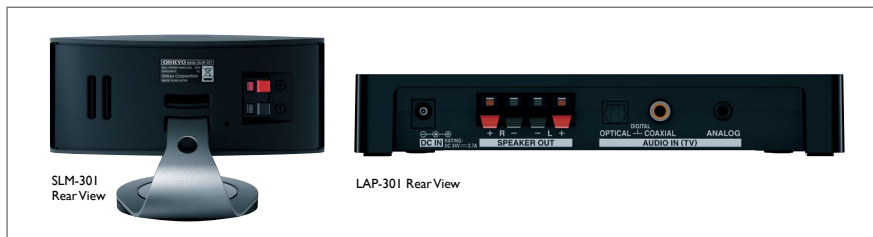
Dimensions (W x H x D)	261 x 337 x 269 mm
Weight	5.8 kg

CARTON

Dimensions (W x H x D)	389 x 567 x 361 mm
Weight	10.5 kg

Supplied Accessories

- 3.5 mm stereo cable • Optical cable
- Power cord (LAP-301, SLW-301) • Speaker cable x 2
- Wire safety retainers for wall-mounting with stand
- Quick start guide • Instruction manual • Remote controller



LS3100(B)



LS3100(W)



Due to a policy of continuous product improvement, Onkyo reserves the right to change specifications and appearance without notice. The Bluetooth word mark and logos are owned by the Bluetooth SIG, Inc. Manufactured under license from Dolby Laboratories. Dolby and the double-D symbol are trademarks of Dolby Laboratories. SFS® and SFS® are trademarks of SRS Labs, Inc. WOW HD and TruVolume technologies are incorporated under license from SRS Labs, Inc. All other trademarks and registered trademarks are the property of their respective holders.

ONKYO

Onkyo Corporation Kilahama Chuo Bldg. 2-2-22 Kilahama, Chuo-ku, Osaka 541-0041 JAPAN <http://www.onkyo.com/>
 Onkyo Europe Electronics GmbH Liegnitzerstrasse 6, 82194 Grobenzell, GERMANY Tel: 49-8142-4208-10 Fax: 49-8142-4208-202 <http://www.eu.onkyo.com/>
 Onkyo Europe Electronics GmbH (UK Branch) Unit 19, Building 6, Croxley Green Business Park, Hatters Lane, Watford Hertfordshire, WD18 8YH UNITED KINGDOM
 Tel: +44(0)1628-473350 Fax: +44(0)1628-401700 <http://www.onkyo.co.uk/>
 Onkyo China Limited Unit 1033, 10/F., Star House, No. 3, Salisbury Road, Tsim Sha Tsui, Kowloon, Hong Kong, CHINA Tel: 852-2429-3118 Fax: 852-2428-9039 <http://www.onkyochina.com/>